

# Microswiss FlowTech™ Hotend for Anycubic Kobra S1

## INSTALLATION INSTRUCTIONS

**Tools Required:**

2.0mm Allen wrench

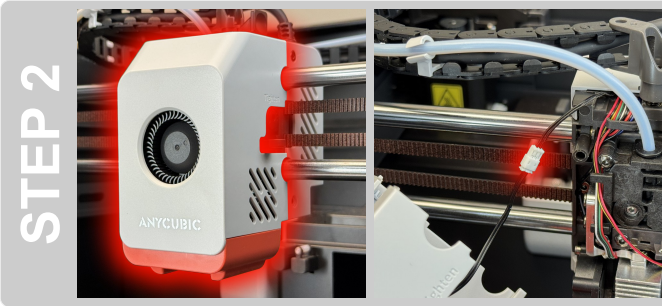
**What's in the box:**

Heatsink	0.4mm CHT CM2 Nozzle
Titanium Mounting Screws (2x)	Silicone Sock
Heater Core	



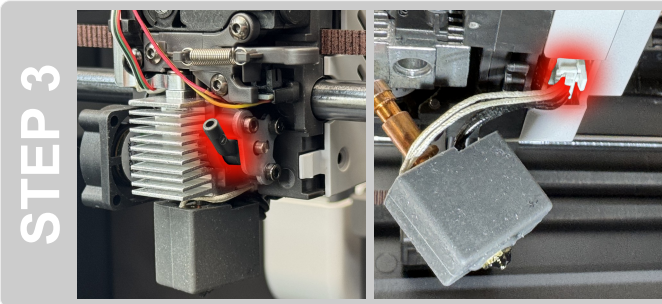
**SAFETY / PREPARATION**

- Unload the filament from the print head.
- Allow the hotend to cool down to room temperature.
- Issue Move commands to lower the build surface to the bottom.
- Power off the printer.
- Disconnect the power cable from the printer.



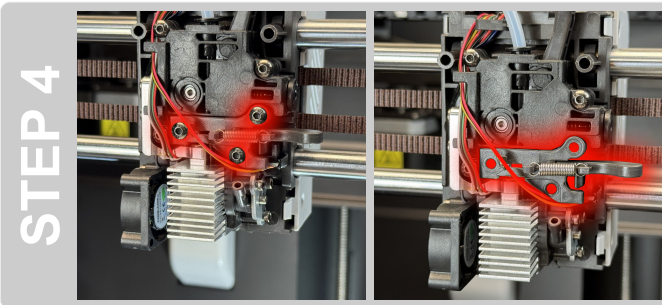
**REMOVE THE FAN SHROUD**

- Pull the fan shroud off the print head.
- Disconnect the part cooling fan.
- Set the fan shroud aside.



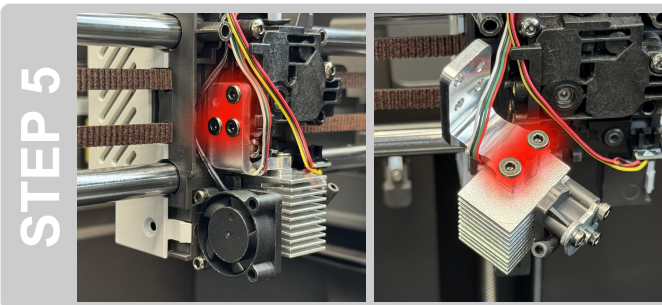
**REMOVE THE ORIGINAL HEATER CORE**

- Move the lever on the side of the heatsink upward to release the hotend.
- Pull the heater core down to detach it from the heatsink.
- Disconnect the heater core from the print head by pinching the tab on the connector and then pulling it out.
- Set the original heater core assembly aside.



**REMOVE THE CUTTER ASSEMBLY**

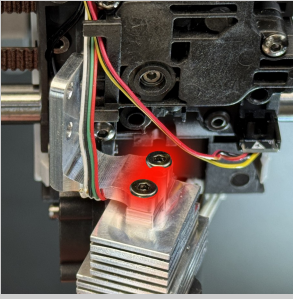
- Remove the three screws securing the cutter assembly. (2.0mm Allen wrench)
- Take the cutter assembly off and set it aside.



**REMOVE THE ORIGINAL HEATSINK**

- Unfasten the strain gauge by removing the three screws on the left side of the bracket. (2.0mm Allen wrench)
- Separate the strain gauge from the original heatsink by removing the two screws securing them together. (2.0mm Allen wrench)
- Set the original heatsink aside.

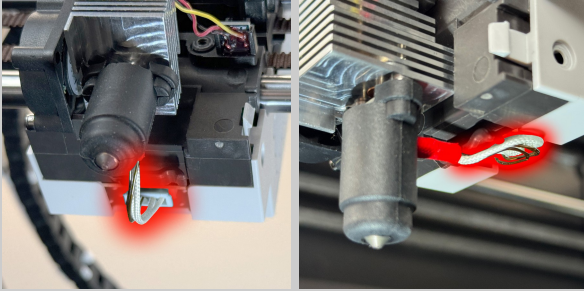
## STEP 6



### ATTACH THE STRAIN GAUGE

- Attach the FlowTech hotend assembly to the strain gauge using the two original mounting screws. (2.0mm Allen wrench)

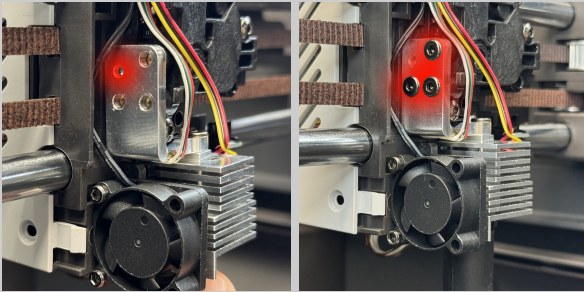
## STEP 7



### CONNECT THE HEATER CORE

- Connect the FlowTech heater core connector to the port at the bottom of the carriage.
- Bend the wires upward so they sit flat against the bottom of the carriage. **Wires that sag downward can interfere during the automatic filament change process.**

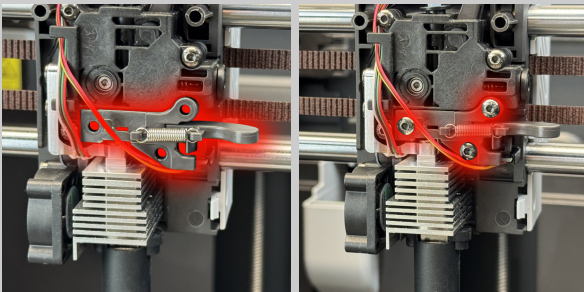
## STEP 8



### FASTEN THE HOTEND ASSEMBLY

- Align the strain gauge with the mounting holes on its left side, making sure the alignment stub seats into the top left hole of the strain gauge.
- Fasten the strain gauge using the three original mounting screws. (2.0mm Allen wrench)

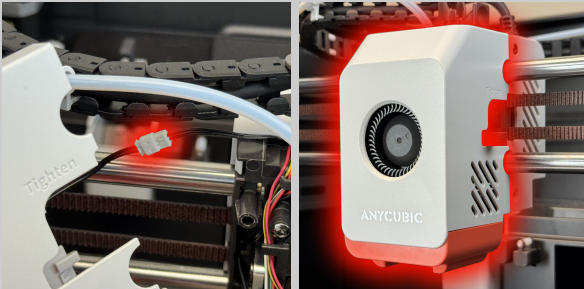
## STEP 9



### REINSTALL THE CUTTER ASSEMBLY

- Align the cutter with the matching mounting holes at the front of the carriage.
- Fasten the cutter assembly using the three original mounting screws. (2.0mm Allen wrench)

## STEP 10



### REINSTALL THE FAN SHROUD

- Reattach the part cooling fan connector.
- Press the fan shroud back onto the print head until it latches into place.

**Installation Complete!**

## COLD NOZZLE REPLACEMENT PROCEDURE

- Allow the hotend to cool down to room temperature.
- Remove the fan shroud and pull the silicone sock off of the heater core.
- Unscrew the nozzle using a 7mm wrench.
- Install and torque the nozzle to **15 in-lb** using a 7mm wrench.
- Replace the silicone sock and reinstall the fan shroud.

[Click here for replacement FlowTech nozzles](#)